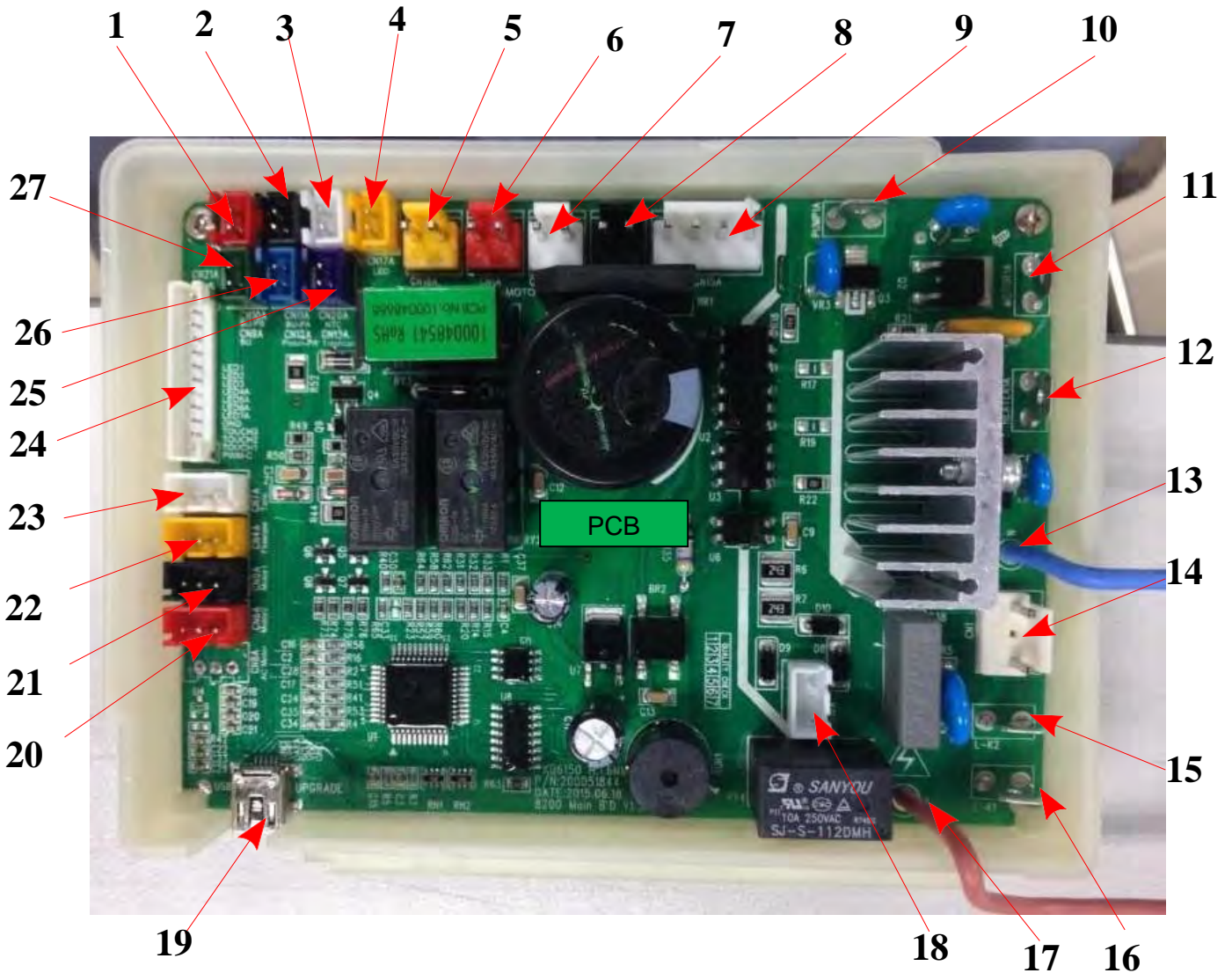


202xxx SCOTT Coffee Machine-Service Manual

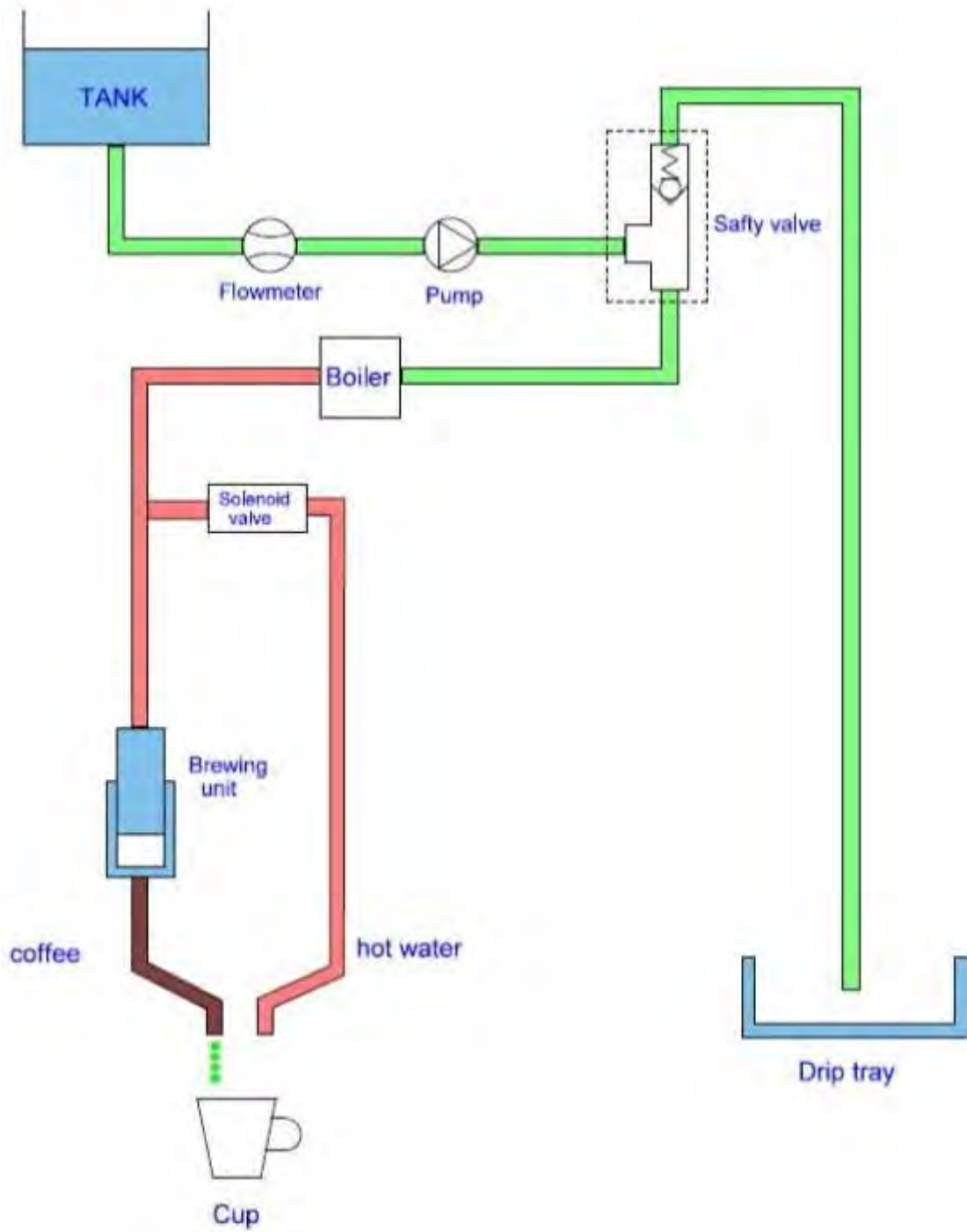


PCB CIRCUIT



1	Brewing base corner switch	11	Grinder-N(black line)	21	Brewing stopper motor sensor
2	Brewing base reset switch	12	Boiler-N(blue line)	22	Flowmetre sensor
3	Boiler NTC	13	Power cord-N(blue line)	23	Water tank sensor
4	Coffee lamp	14	Transformer input 2 pole(red line)	24	Connect UI board
5	Solenoid valve power(24V)	15	Boiler/Grinder-L(brown line)	25	Water receiver sensor
6	Brewing stopper motor power	16	Pump-L(brown line)	26	0-Brewing stopper switch
7	Brewing base motor power	17	Power cord-L(brown line)	27	Brewing unit switch
8	Door-switch	18	Power-switch	28	
9	Transformer input 4pole (blue line)	19	Program input	29	
10	Pump-N(blue line)	20	Brewing base motor sensor	30	

STEAM/WATER CIRCUIT



DISASSEMBLE GUIDE FOR DIFFERENT PART

- 1. DISASSEMBLE MAIN BODY**
- 2. DISASSEMBLE CONTROL PANEL**
- 3. DISASSEMBLE TOP COVER**
- 4. DISASSEMBLE GRINDER UNIT**
- 5. DISASSEMBLE BOILER**
- 6. DISASSEMBLE COFFEE NOZZLE**
- 7. DISASSEMBLE COFFEE LAMP**
- 8. DISASSEMBLE PANEL**
- 9. DISASSEMBLE WATER TANK'S FIXED COVER**
- 10. DISASSEMBLE PUMP**
- 11. DISASSEMBLE FLOW METER**
- 12. DISASSEMBLE TRANSFORMER**
- 13. DISASSEMBLE BREWING STOPPER GEAR CASE**
- 14. DISASSEMBLE SOLENOID VALVE**
- 15. DISASSEMBLE SIDE DOOR**
- 16. DISASSEMBLE BREWING PISTON UNIT**
- 17. DISASSEMBLE BREWING PISTON RESET SWITCH**
- 18. DISASSEMBLE RUBBER HOSE PROTECTIVE COVER**
- 19. DISASSEMBLE POWER PCB**
- 20. DISASSEMBLE BREWING GEAR CASE**
- 21. DISASSEMBLE BREWING UNIT CONTROL**

1. DISASSEMBLE MAIN BODY

a. Remove the water receiver assembly



b. Remove the water tray receiver box



c. Remove the sidedoor assembly



d.Remove the water tank



e.Remove the four screws



f.Remove the snap joints of the main body



g. Push the main body (as the direction of arrow)



2. DISASSEMBLE CONTROL PANEL

a. Remove the two screws of both sides



b. Remove the snap joints of the control panel



c. Now the control panel is taken out (as the direction of arrow)



3. DISASSEMBLE TOP COVER

a. Remove the two screws



b. Remove the snap joints of both sides



(1)

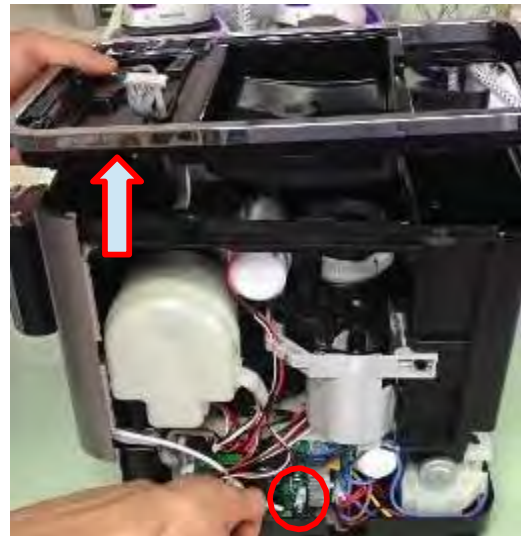


(2)



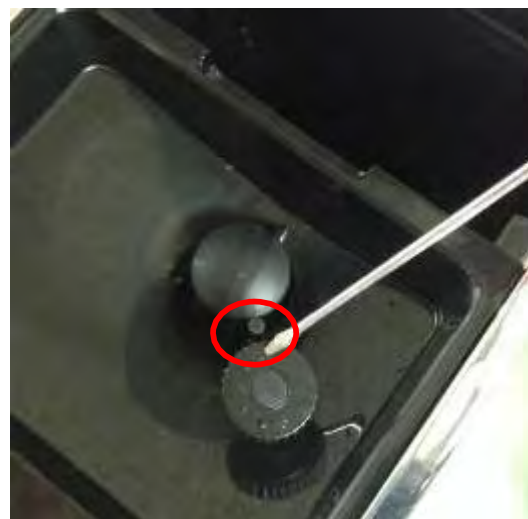
(3)

c. Take out the top cover (as the direction of arrow) after switching off

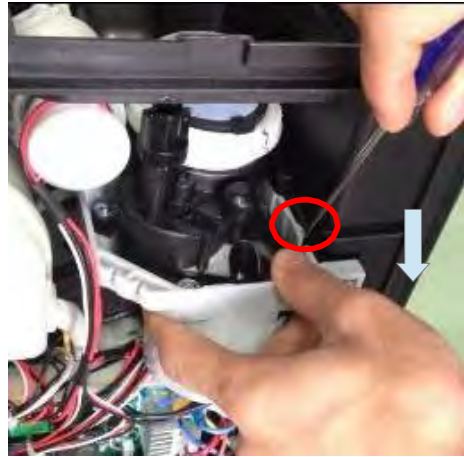


4. DISASSEMBLE GRINDER UNIT

a. We should adjust the knob to thinnest when remove the grinder unit



b. Remove the snap joints of the grinder supporter



c. Take out the grinder after removing the two black lead wires

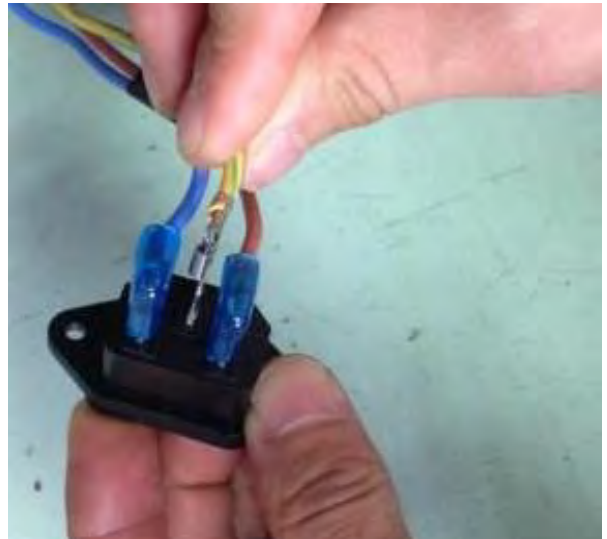


5. DISASSEMBLE BOILER

a. Remove the two wire



b. Remove the power switch E wire



c.Remove the power PCB



d.remind the angle when turning the boiler for removing



e.Remove the spring and take out the boiler



6. DISASSEMBLE COFFEE NOZZLE

a.Remove the one screw



b.Remove the fixing part



c.Pull the coffee nozzle cover



e.Pull the cover of water outlet



f.pull the rubber hose



g.Remove the coffee nozzle by pulling up



7. DISASSEMBLE COFFEE LAMP

a.Remove the two screws



b.Remove the snap joints (of coffee lamp PCB)



c.Take out the coffee lamp PCB



8. DISASSEMBLE PANEL



9. DISASSEMBLE WATER TANK'S FIXED COVER

a.Remove the snap joints (of the fixed cover)



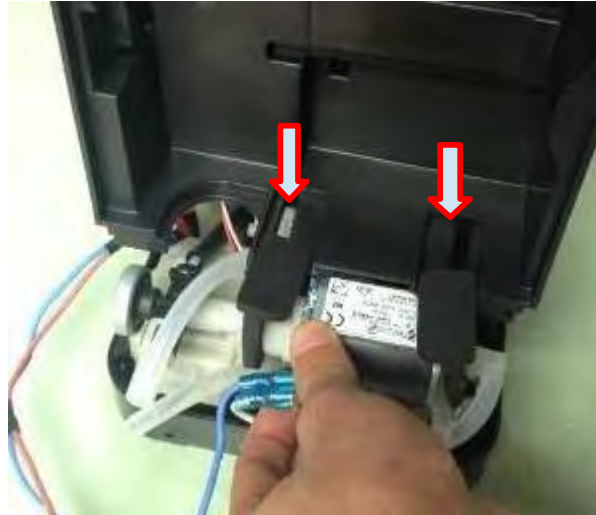
b.Push the water tank's fixed units



c.Pull the rubber hose and remove the fixed cover



10. DISASSEMBLE PUMP

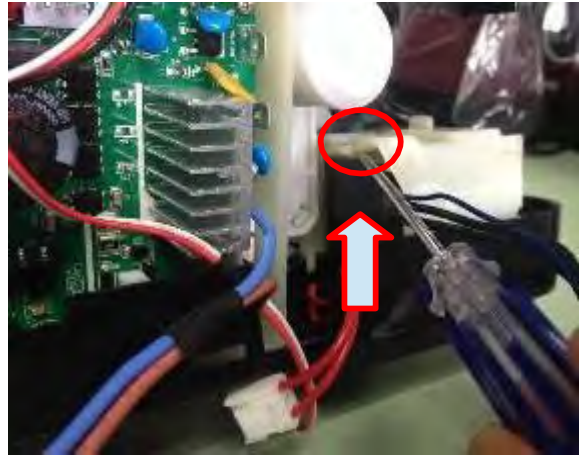


11. DISASSEMBLE FLOW METER

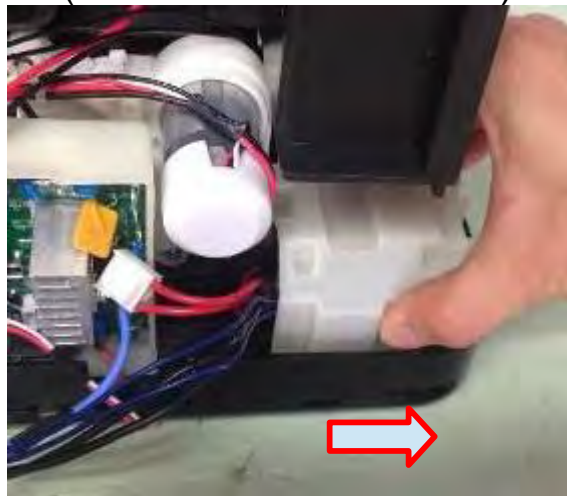


12. DISASSEMBLE TRANSFORMER

a. Remove the snap joint



b. Push the transformer protective cover (as the direction of arrow)



13. DISASSEMBLE BREWING STOPPER GEAR CASE

a. Remove the snap joints as the picture says

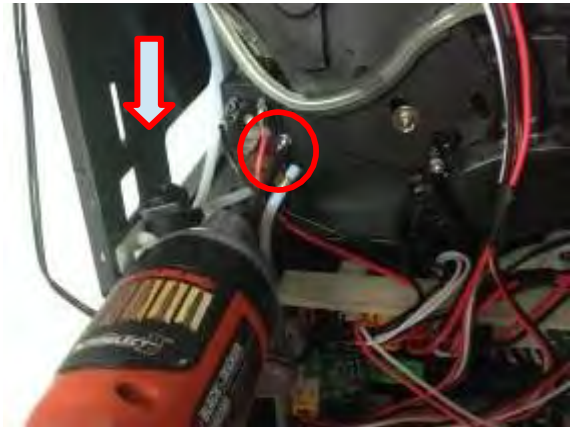


b. Push the brewing stopper gear case (as the direction of arrow)



14. DISASSEMBLE SOLENOID VALVE

a. Take out the solenoid valve by the removal of screws

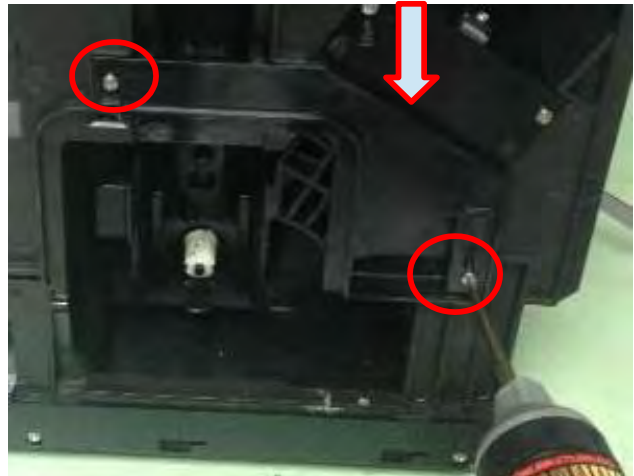


b. Remove the spring joints



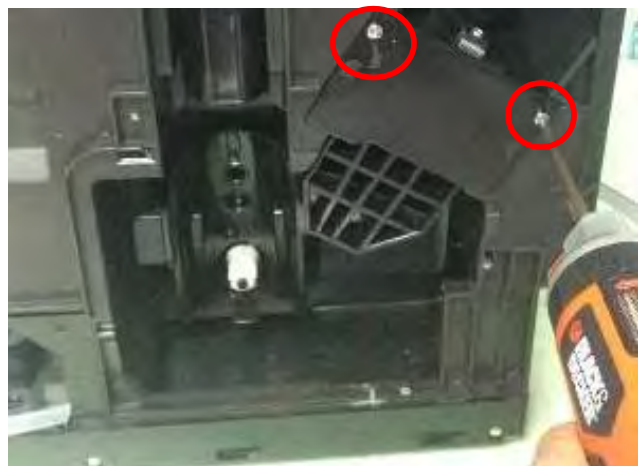
15. DISASSEMBLE SIDE DOOR

a. Take it out by the removal of two screws



16. DISASSEMBLE BREWING PISTON

a. Remove the two screws



b. Remove the screws of another side



c. Take out the brewing stopper (you can turn the gear which is shown in a circle for moving the piston if it is not high enough to take it out)



17. DISASSEMBLE BREWING PISTON RESET SWITCH

a. Remove the snap joints and push it (as the direction of arrow)



18. DISASSEMBLE RUBBER HOSE PROTECTIVE COVER

a. Remove one screw as the picture says

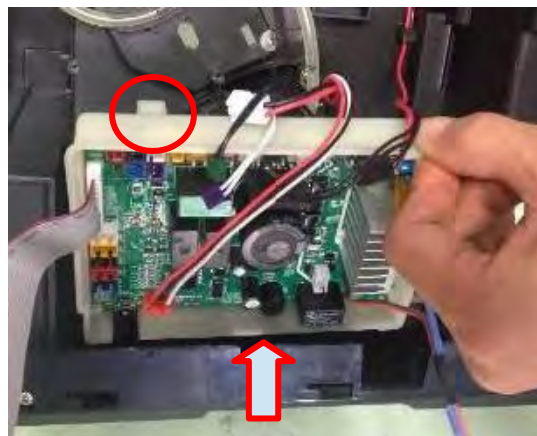


b. Take out the rubber hose protective cover



19. DISASSEMBLE POWER PCB

a. Take out the power PCB by the removal of the snap joints



20. DISASSEMBLE BREWING GEAR CASE

a. Remove three screws and take it out



21. DISASSEMBLE BREWING UNIT CONTROL

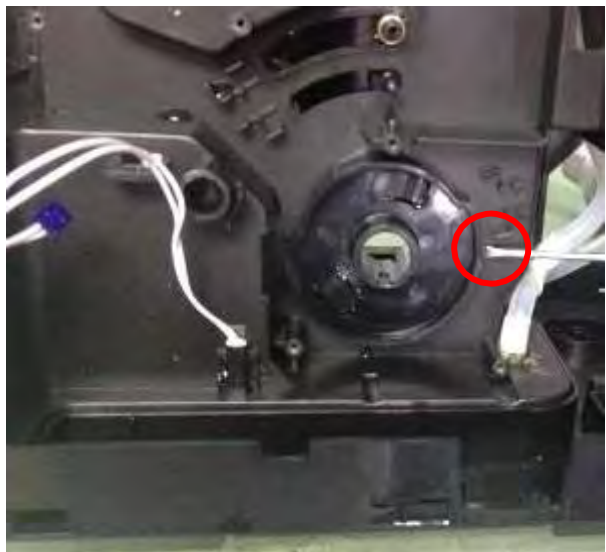
a. Remove the one screw



b. Remove the rubber spring snap joints and the rubber hose



c. Just pry the brewing unit control



SPARE PART EXPLODE VIEW

